

## Yr 3 Addition and subtraction Unit 1 (3413)

### Additional teacher instructions for practice sheets

These notes indicate which practice sheets are most appropriate for which groups.

#### Day 1 Adding pairs of 2-digit numbers Sheet 1

Working towards ARE

#### Day 1 Adding two amounts of money Sheet 2

Working at ARE / Greater Depth

Greater Depth could also find two pairs of stickers with a total greater than £1.

#### Day 2 Adding 2-digit numbers Sheet 1

Working towards ARE / Working at ARE / Greater Depth

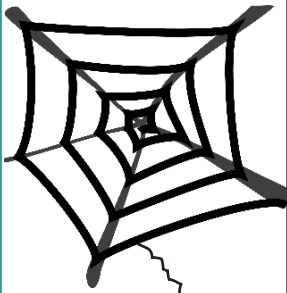
Working towards ARE complete as many of the first 10 as they can.

Working at ARE do questions 1 to 12.

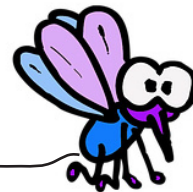
Greater Depth do questions 5 to 16.

# Adding pairs of 2-digit numbers

## Sheet 1



1	2	3	4	5	6	7	8	9	10
11	12	13	14	15	16	17	18	19	20
21	22	23	24	25	26	27	28	29	30
31	32	33	34	35	36	37	38	39	40
41	42	43	44	45	46	47	48	49	50
51	52	53	54	55	56	57	58	59	60
61	62	63	64	65	66	67	68	69	70
71	72	73	74	75	76	77	78	79	80
81	82	83	84	85	86	87	88	89	90
91	92	93	94	95	96	97	98	99	100



Draw a line to show how spider and fly help you to work out these additions:

1.  $54 + 21 =$

2.  $72 + 22 =$

3.  $54 + 35 =$

4.  $12 + 77 =$

5.  $23 + 55 =$

6.  $43 + 21 =$

7.  $32 + 47 =$

8.  $28 + 12 =$

# Adding two amounts of money

## Sheet 2

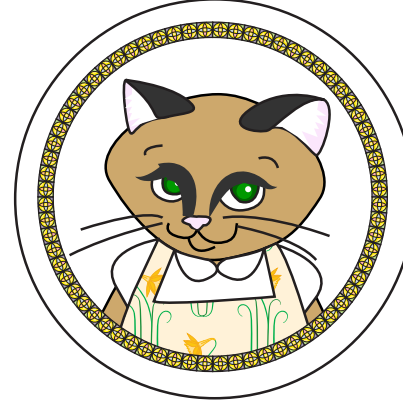
You have £1 pocket money to spend. Which two stickers can you buy? Find as many pairs as you can.



70p



27p



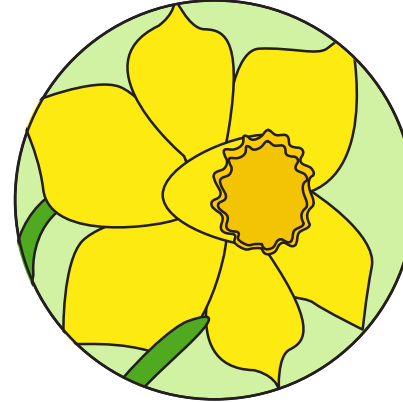
73p



23p



41p



59p

# Adding 2-digit numbers

## Sheet 1

1.  $36 + 23 =$

2.  $54 + 24 =$

3.  $67 + 21 =$

4.  $65 + 25 =$

5.  $36 + 47 + 54 =$

6.  $42 + 28 + 38 =$

7.  $53 + 27 + 41 =$

8.  $52 + 62 + 38 =$

9.  $42 + 37 + 48 =$

10.  $55 + 32 + 25 =$

11. Ellie bought a skateboard for £45, a helmet for £24 and knee pads for £19.  
How much did she spend altogether?

12. Daniel bought roller skates for £56, a helmet for £24 and arm pads for £21.  
How much did he spend altogether?

13.  $146 + 58 + 47 =$

14.  $241 + 27 + 18 =$

15.  $135 + 28 + 36 =$

16.  $127 + 54 + 31 =$

### Challenge

Can you find three two-digit numbers that add up to a total of 200?

# Addition and subtraction

## Answers

### Day 1 Adding pairs of 2-digit numbers Sheet 1

1.  $54 + 21 = 75$
2.  $72 + 22 = 94$
3.  $54 + 35 = 89$
4.  $12 + 77 = 89$
5.  $23 + 55 = 78$
6.  $43 + 21 = 64$
7.  $32 + 47 = 79$
8.  $28 + 12 = 40$

### Day 1 Adding two amounts of money Sheet 2

Possible combinations:

- $73\text{p} + 27\text{p} = \text{£}1$
- $73\text{p} + 23\text{p} = 96\text{p}$
- $70\text{p} + 27\text{p} = 97\text{p}$
- $70\text{p} + 23\text{p} = 93\text{p}$
- $59\text{p} + 41\text{p} = \text{£}1$
- $59\text{p} + 27\text{p} = 86\text{p}$
- $59\text{p} + 23\text{p} = 82\text{p}$
- $41\text{p} + 27\text{p} = 68\text{p}$
- $41\text{p} + 23\text{p} = 64\text{p}$
- $27\text{p} + 23\text{p} = 50\text{p}$

### Day 2 Adding 2-digit numbers Sheet 1

1.  $36 + 23 = 59$
2.  $54 + 24 = 78$
3.  $67 + 21 = 88$
4.  $65 + 25 = 90$
5.  $36 + 47 + 54 = 137$
6.  $42 + 28 + 38 = 108$
7.  $53 + 27 + 41 = 121$
8.  $52 + 62 + 38 = 152$
9.  $42 + 37 + 48 = 127$
10.  $55 + 32 + 25 = 112$
11.  $\text{£}45 + \text{£}24 + \text{£}19 = \text{£}88$
12.  $\text{£}56 + \text{£}24 + \text{£}21 = \text{£}101$
13.  $146 + 58 + 47 = 251$
14.  $241 + 27 + 18 = 286$
15.  $135 + 28 + 36 = 199$
16.  $127 + 54 + 31 = 212$