

Science - Year 5

Living Things and their Habitats – Block 5LvH

The Art of Living

Session 4

Resource Pack

Matching mammals and young



Badger

Cub



Deer

Fawn



Fox

Cub Kit
Pup



Hare

Leveret



Hedgehog

**Piglet
Hoglet
Pup**



Mole

Pup



Mouse

**Pup Pinkie
Kitten**



Otter

**Whelp
Pup**



Rabbit

Kitten



Rat

**Pup Pinkie
Kitten**



Squirrel

**Pup Kit
Kitten**

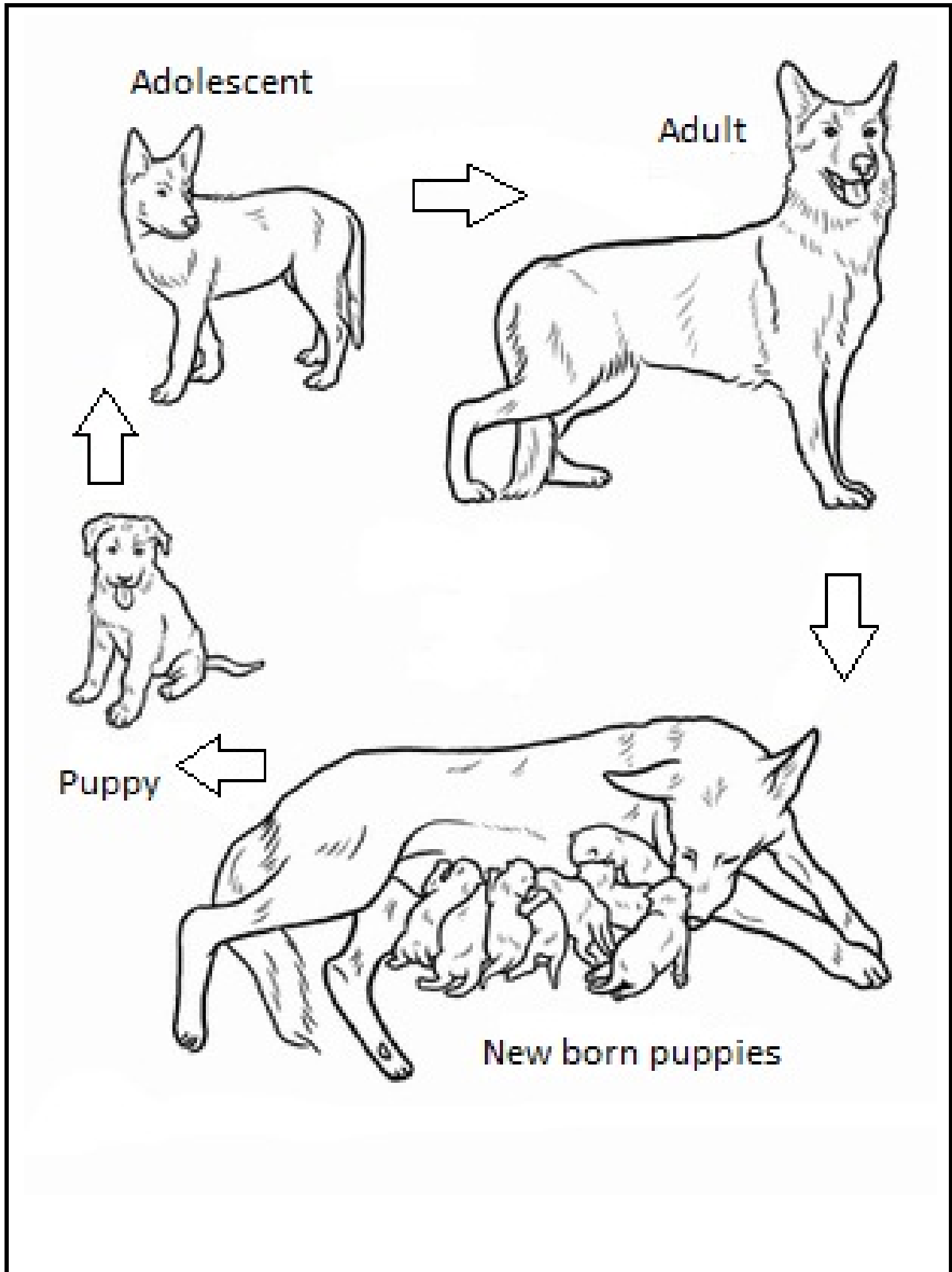


Weasel

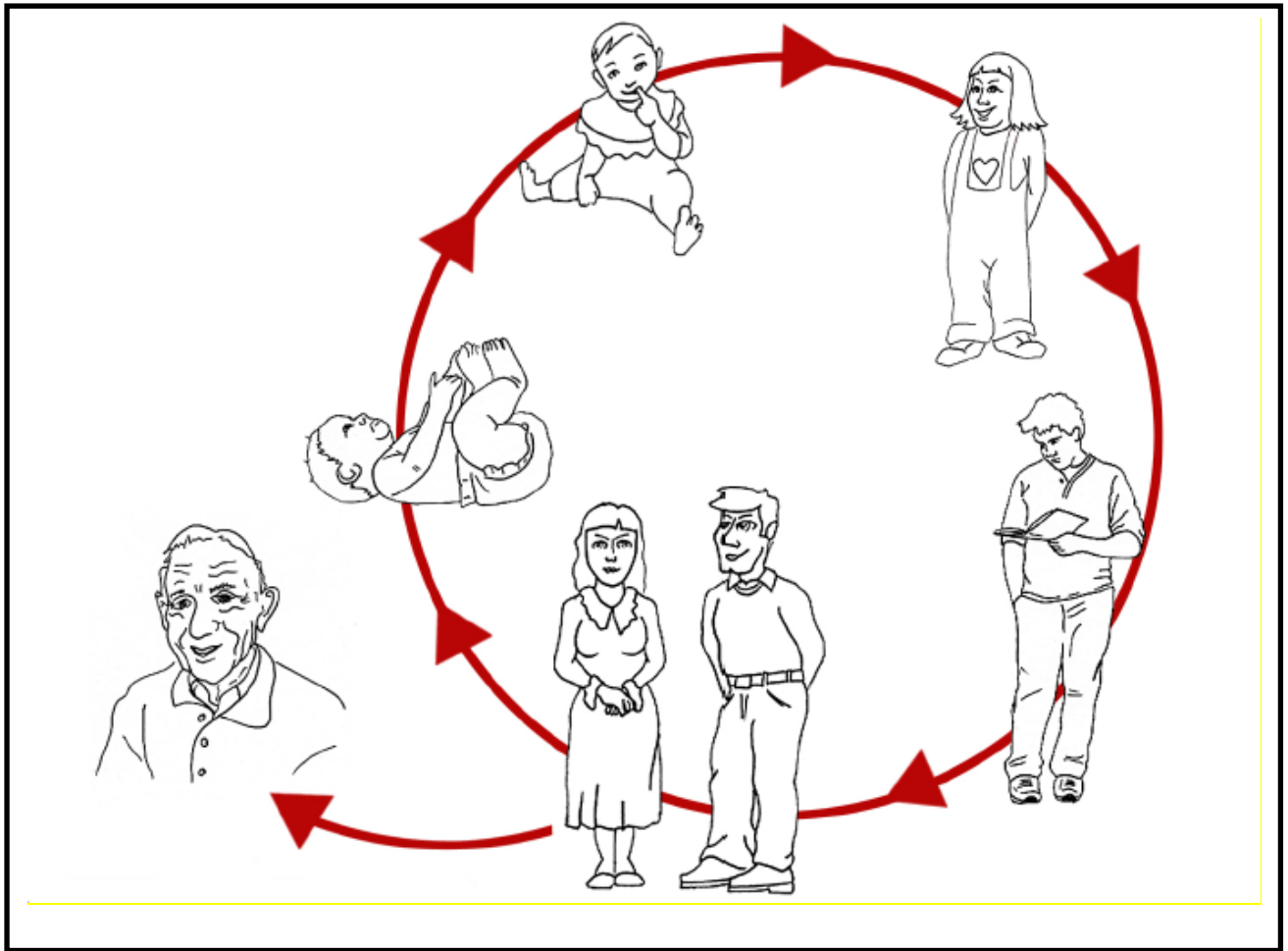
Kit

Mammalian and bird life cycles

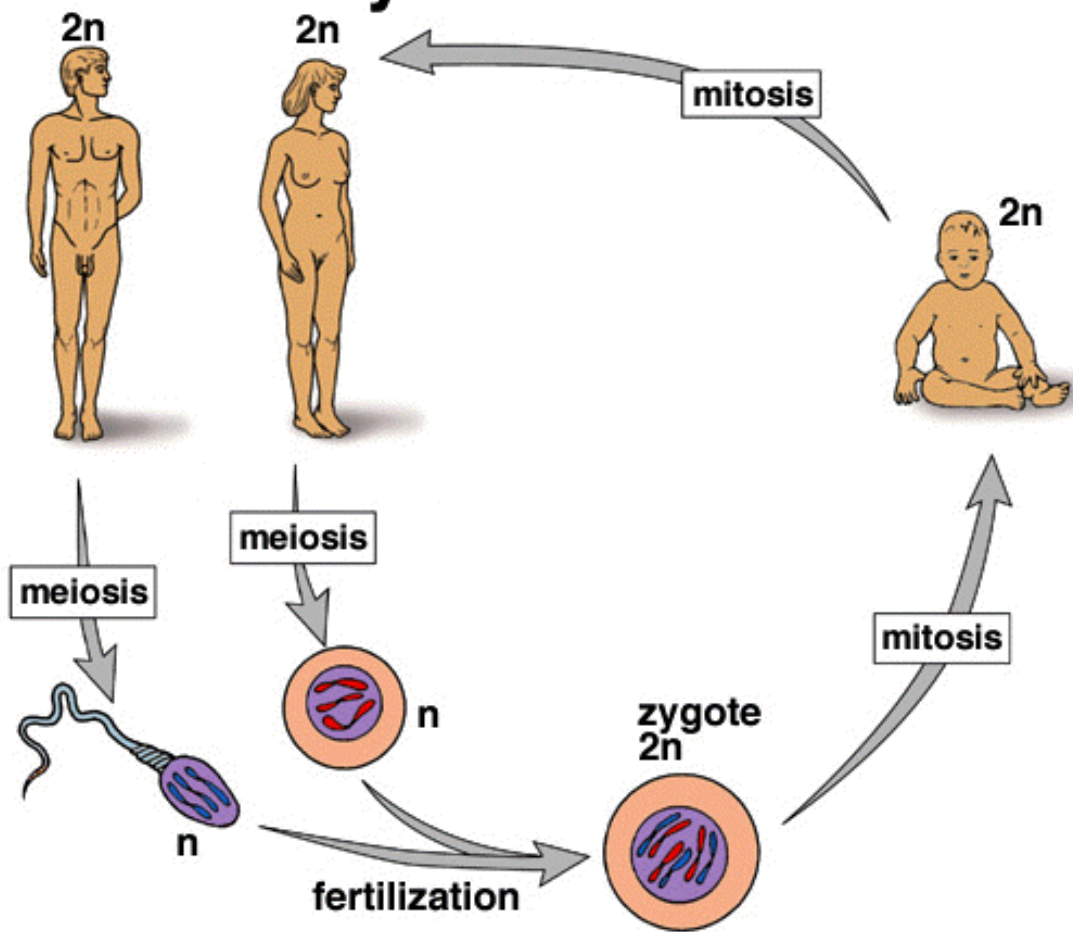
Life Cycle of a Dog



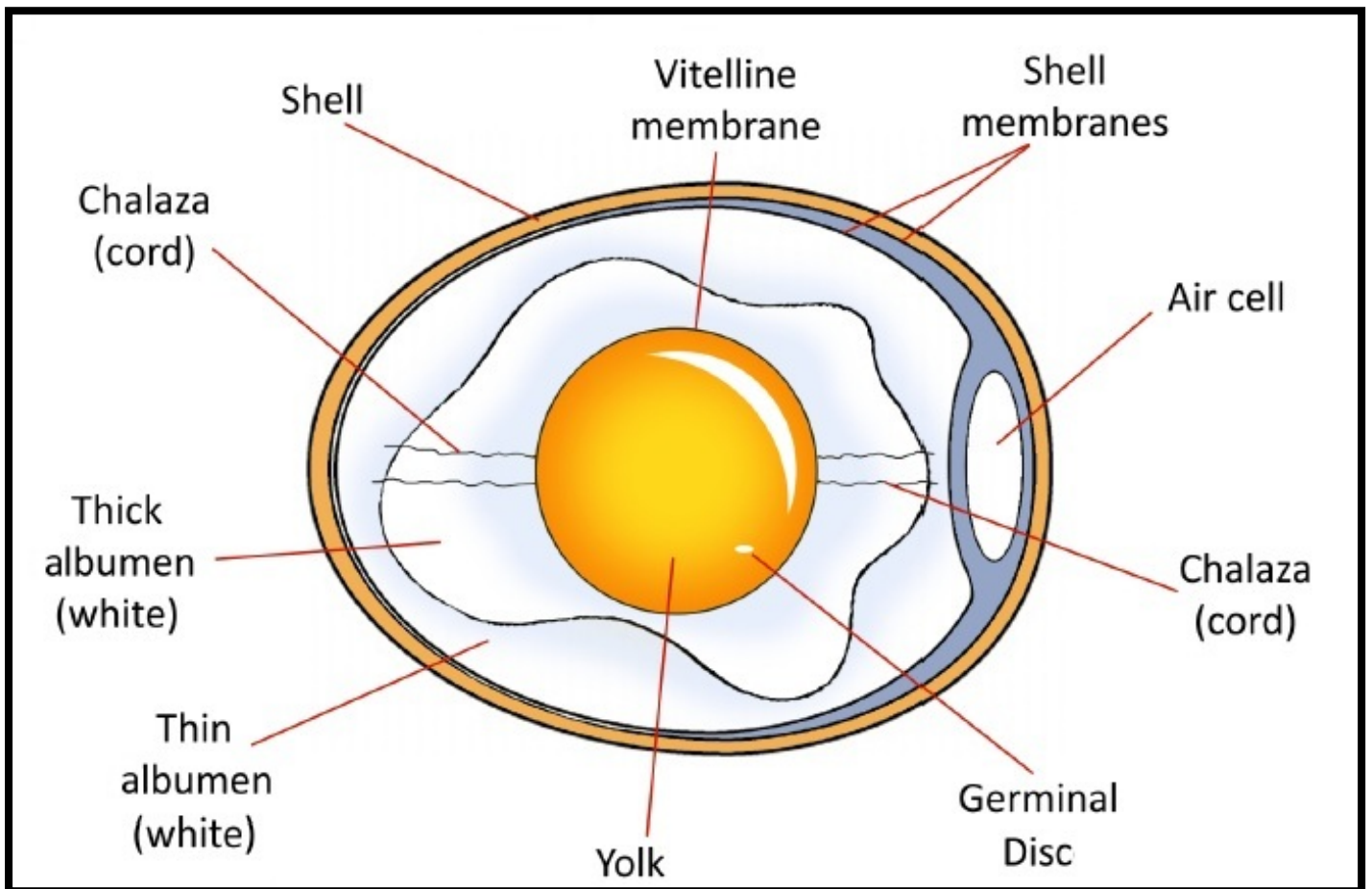
Human life cycle



Life cycle of humans



The Structure of an Egg



Bird life cycle challenge

Cut out each statement and place around the room. Challenge children to view them all, sketch an image for each, and create a life cycle that references each statement.

Parents often continue feeding their young for several days after they have fledged, while their wing feathers and muscles develop further.

When it is ready to fly from the nest the bird is called a fledgling.

The hatchling is dependent on its parents for shelter, food and hygiene (nestling).

The baby bird (chick) hatches out using its egg tooth (a structure on the beak which drops off a few days later).

The parent birds usually take it in turn to sit on the eggs to protect them and keep them warm (incubation).

Fertilisation takes place before the egg is laid when a male and female bird come together.

The embryo develops inside the egg which the mother lays in a nest.

Once it is fully grown, an adult bird is ready to mate.

Hatch and Rear Chicks in the Classroom

Set up your own hatchery over a period of two weeks, using the equipment and expertise of a company such as Living Eggs:

<http://www.livingeggs.co.uk/hatch-a-chick/what-we-do/>

Or have a few visits/talks alongside the hire of the incubator and eggs – see:

<http://www.animalsineducation.co.uk/Incubators-for-Schools.html>

There may also be a local organisation that provides similar experiences located near you. The chicks are then rehomed by the organisations concerned.

<http://www.livingeggs.co.uk/hatch-a-chick/what-we-do/>

<http://www.animalsineducation.co.uk/Incubators-for-Schools.html>

<http://www.purebreedpoultry.com/incubatorhire.html>

<http://www.stophamgardenpoultry.co.uk/incubator-hire/pricing>

<http://www.thehappychickcompany.co.uk/chick-hatching-at-schools.html>

<http://www.wellingtonbootschoolprojects.co.uk/hatching-and-rearing.html> - Greater Manchester and the North West

<http://www.homegrownandraised.co.uk/chickfac.php> - Northamptonshire and Cambridgeshire

Follow the incubation, hatching and rearing of chicks online:

<http://www.relaxedfarming.co.uk/> - Watch chicks being hatched & reared online – diary, photos and videos

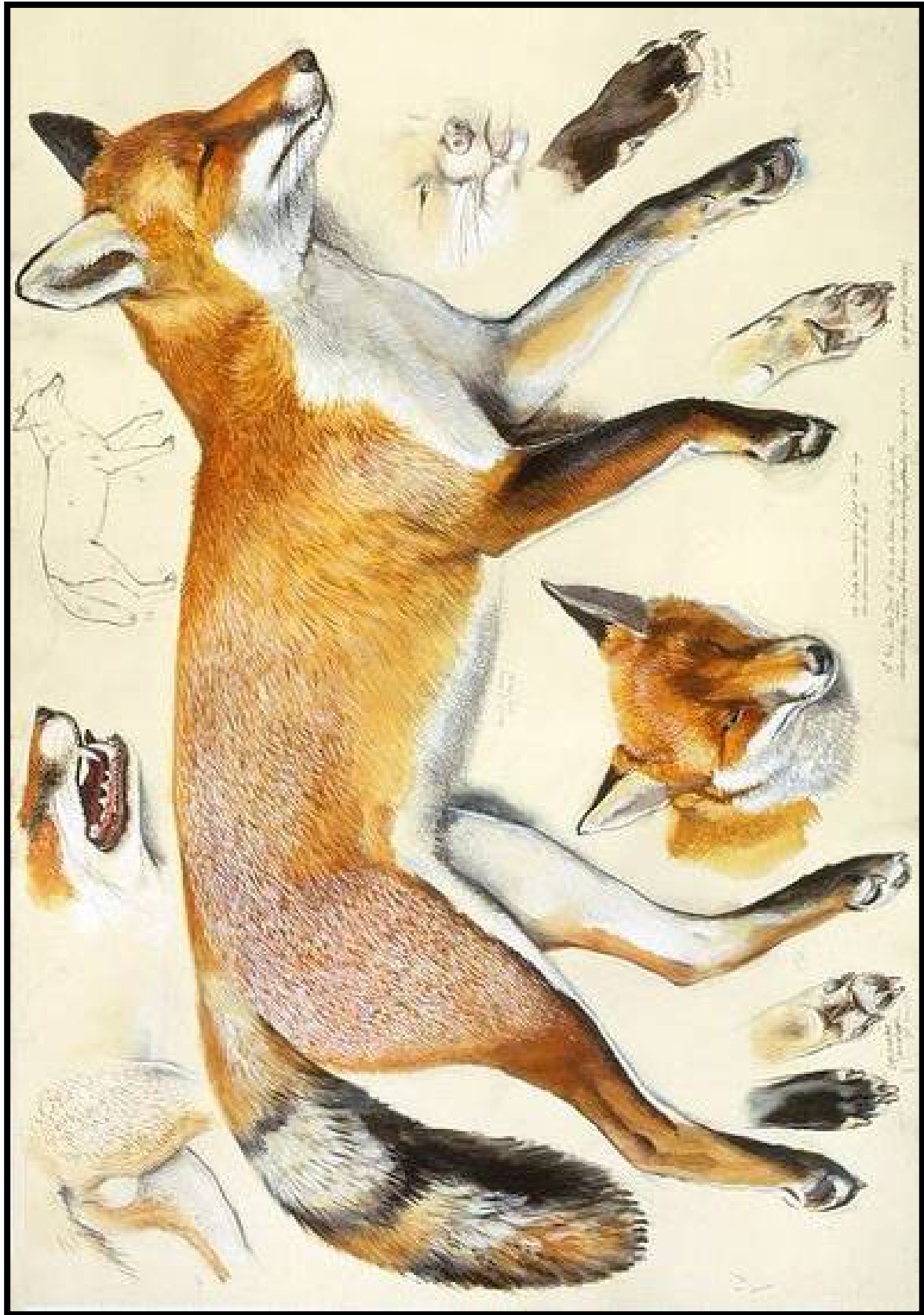
Videos of chicks hatching:

<http://www.primarygames.com/holidays/easter/videos/chick-hatching-from-egg/>

<http://www.msichicago.org/online-science/videos/video-detail/activities/the-hatchery/>

<http://www.teachertube.com/video/97047>

Bird and mammalian illustration examples





#100675955

May 60

Guidelines for zoological illustrations

Things to research and incorporate into your illustrations:

- The life cycle of the mammal or bird, including reproduction
- Specific stages of development (e.g. egg or foetus)
- Any specialist names for the mammal or bird at specific stages (e.g. chick)
- Gestation period and the age at which the mammal or bird leaves its parents
- The age that the mammal or bird becomes adult and how long they live on average

Focus on accuracy and texture in your drawings and consider carefully how you lay out the drawings so that you can annotate them.

Guidelines for zoological illustrations

Things to research and incorporate into your illustrations:

- The life cycle of the mammal or bird, including reproduction
- Specific stages of development (e.g. egg or foetus)
- Any specialist names for the mammal or bird at specific stages (e.g. chick)
- Gestation period and the age at which the mammal or bird leaves its parents
- The age that the mammal or bird becomes adult and how long they live on average

Focus on accuracy and texture in your drawings and consider carefully how you lay out the drawings so that you can annotate them.